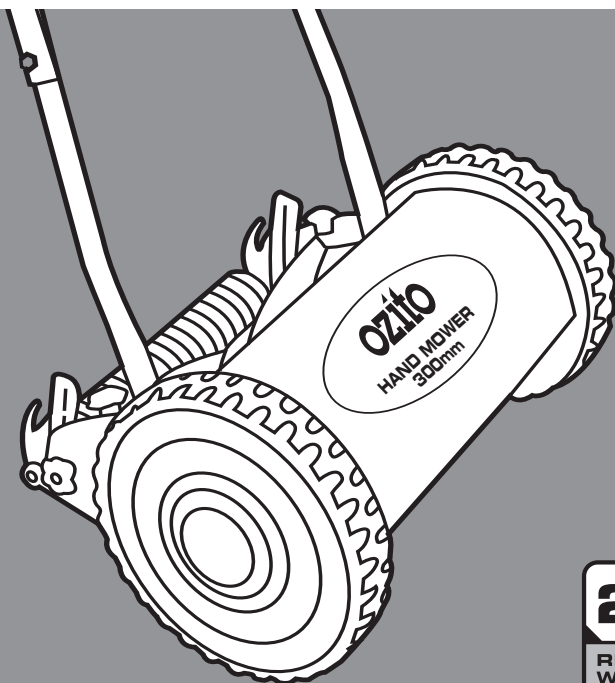


ozito

HAND LAWN MOWER

300mm

MODEL NO. LMP-301



OPERATING INSTRUCTIONS 0208

Always Wear Eye, Face & Ear Protection

www.ozito.com.au

SPECIFICATIONS - MODEL NO. LMP-301

Cutting width:

300mm

Cutting height:

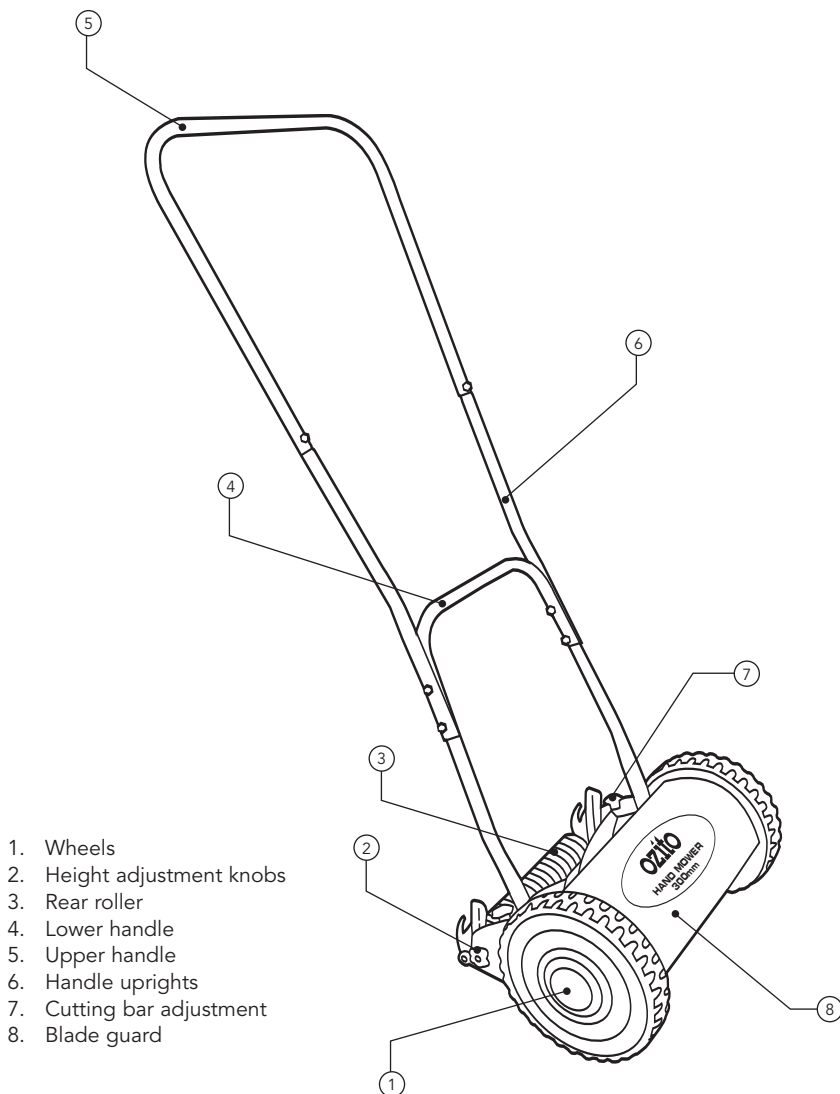
15 - 40mm

Features:

Height adjustable

Self sharpening blades

Quiet operation



INTRODUCTION

Congratulations on purchasing an Ozito Hand Lawn Mower. We aim to provide quality tools at an affordable price. We hope you will enjoy using this tool for many years.

Your Hand Lawn Mower LMP-301 has been designed for small to medium sized lawns and is intended for DIY purposes only.

SAFETY INSTRUCTIONS

1. Never allow children or people unfamiliar with these instructions to use the mower.
2. Only use the mower in the manner and for the functions described here in.
3. Never operate the mower when you are tired, ill or under the influence of drugs, alcohol or medicine.
4. The operator or user is responsible for accidents or hazards occurring to other people or their property.
5. Use the mower only in daylight or good artificial light.
6. Avoid operating your mower in wet grass, where feasible.
7. Take care in wet grass, you may lose your footing.
8. On slopes be extra careful of your footing and wear non-slip footwear.
9. Mow across the face of slopes, never up and down.
10. Exercise extreme caution when changing direction on slopes. Walk never run.
11. Mowing on banks and slopes can be dangerous. Do not mow on banks or steep slopes.
12. Do not walk backwards when mowing, you could trip.
13. Never cut grass by pulling the mower towards you.
14. Never operate the mower with damaged guards or without guards in place.
15. Keep hands and feet away from the blade at all times and especially when the mower is in use.
16. Do not put hands near the blades during operation.

ASSEMBLY

Your Ozito Hand Lawn Mower comes partly assembled, only the handle requires assembly.

To assemble the handle, find the U-shaped bar with the open (circular) ends and insert the two handle uprights into the ends. Ensure the uprights curve outwards once inserted.

Using two sets of nuts and bolts, line up the holes to enable you to insert a bolt with a washer all the way through both bars and fasten with another washer and nut.

ASSEMBLY (cont.)

Find the U-shape bar with flattened ends with large holes. Insert the bent end of the bar between the two protruding ends of the section just assembled. Line up the two holes on both sides and insert a bolt with a washer all the way through both bars and fasten with another washer and nut. Do the same with the remaining 3 sets of holes.

Now the handle is fully assembled, and ready to be attached to the mower head. To attach the handle to the mower head, locate the two metal lugs found forward of the cutting bar adjustment knobs. To attach the handle, insert one of the large holes in the handle arm over the lug, then repeat the same process with the other side. It may be required to use some force to squeeze the two arms together to allow room for locating the second arm over the remaining metal lug.

ADJUSTMENTS

Changing the Cutting Height

Changing the cutting height is quick, easy, and requires no tools. Simply unscrew the locking knobs on each side of the rear roller. This enables the roller assembly to slide up or down to place the cutting bar at a different height level. Make sure the height is the same on both sides. Re-tighten the locking knobs until the roller assembly is secured in position.

Note: It is essential that the height is the same on both sides of the hand lawn mower.

Adjusting the Cutting Bar to the Blades

The cutting bar should be as close to the blades as possible, they should make slight contact making a whispery sound (like scissors opening and closing) when the blades are rotated manually, ensure the bar does not stop the blades from rotating. To raise or lower the bar loosen or tighten the adjustment knobs on the ends of the cutting bar (located behind the reel blades, above the roller).

Note: A small 1/16 of a turn is a major adjustment.

To loosen the blades, or move them further away from the cutting bar, loosen the cutting bar adjustment knobs on each side equally by turning them anti-clockwise.

To tighten the blades, or move them closer against the cutting bar. Tighten both cutting bar adjustment knobs equally turning them clockwise.

If the mower is only cutting on one side, the cutting bar may be out of alignment with the blade reel. Therefore, tighten the side of the mower that is not cutting to bring it back into alignment.

If the mower is hard to push and the blades barely turn, the cutting bar may be over-tightened against the blade reel .

If the blade reel spins freely and doesn't make contact against the cutting bar, or the mower isn't cutting grass well, the cutting bar may be too loose against the blade reel.

GRASS CATCHER

It is possible to purchase a grass catcher for the Ozito Hand Lawn Mower. This accessory can be purchased from your local Bunnings Warehouse. Accessory model no. ACLMP-001.

PREPARATION

1. While using the hand lawn mower always wear substantial footwear and long trousers.
2. Make sure the lawn is clear of sticks, stones, wire and debris; that could be thrown by the blades.
3. Before using the mower and after any impact, check for signs of wear or damage and repair as necessary.
4. Sharpen worn or damaged blades.

HOW TO MOW

Walk at a Good, Steady Pace.

With a hand lawn mower, the rotation of the wheels turn the blade reel. The mower will tend to bind up and skid if it is moving at too slow a pace. The faster the wheels are travelling, the faster the blade reel turns. Therefore, moving at a comfortably quick walking pace will achieve the best results.

Overlapping Rows.

When mowing a lawn, slightly overlap the row that has already been mowed. This will make the force required to move the mower easier because less grass is being mowed at one time. Overlapping rows will also ensure a neat cut by removing grass that may have been missed on the previous row.

Don't let the Grass get too Tall

Hand lawn mowers are harder to push when the grass gets too tall, therefore it is recommended to mow on a weekly basis.

Hand Lawn Mowers don't Mow Tall Weeds.

The hand lawn mower will tend to roll over tall weeds without cutting them. This includes tall weeds that are more than six inches, and things like dandelions and docs.

If the desired lawn to be mowed has a significant weed infestation, enquire at your local Bunnings store how to rectify the problem, or as an alternative, rent a petrol powered mower to gain control of the lawn. Hand lawn mowers are designed to cut lawns in reasonable condition.

The Metal Guard protects your Garden

The metal guard does not only protect your hands and feet, but also the garden. The hand lawn mower can be pushed right up to flowers and shrubs without damaging them. This feature means the hand lawn mower can cut the edges of the lawn where garden plants exist minimising any potential damage.

SHARPENING THE BLADE

Before taking the time and effort to sharpen the blades, make sure that it needs sharpening. Most of all issues can be solved by ensuring the blades are properly adjusted (ADJUSTMENTS section).

1. Prop up the hand lawn mower so that the blade reel can be rotated by turning the wheels.
2. Check the blades for nicks and burrs. If any damage is found, it usually can be removed by holding a file flat against the blade and pushing away from the edge.
3. Examine the cutting bar. It should just meet the blades along their entire length. (To make sure the cutting bar is located correctly, grasp a wheel and turn it forward; you should hear a whispy sound as the blades pass the cutting bar).
4. If the bar is out of alignment, adjust using the adjustment knobs on the ends of the bar (ADJUSTMENTS section).
5. Using your fingers or a soft paintbrush, cover the blades with a thin, even coat of automotive valve-grinding compound (available at automotive stores).
6. Grasp a wheel and turn it slowly backward so the grinding compound is squeezed between the blades and the cutting bar, thereby sharpening both cutting edges as they pass each other. Be sure that each blade touches the bar as the wheel is rotated.
7. Make about a dozen turns, applying more grinding compound when necessary.
8. Examine the blade edges. If they look sharp, wash off all the valve compound with soapy water and rinse thoroughly.
9. Test for sharpness. Insert a sheet of newspaper between the blades and the cutting bar, and rotate the reel forward. When the blades cut the paper as easily and as cleanly as a sharp pair of scissors would, the task is complete.

Note: After each use, hose the mower clean and wipe it dry. Wipe all the metal parts with a thin film of WD-40 or mineral oil.

Warning! Sharpen blades only by hand. The heat generated by a power grinder or an electric drill with a grinding wheel attached can destroy the temper of the metal. Wear thick leather gloves when handling the blade reel and cutter bar and make slow, precise movements to avoid cutting or jamming your fingers.

MAINTENANCE

Keep all nuts, bolts and screws tight to be sure the mower is in a safe working condition.

Replace worn or damaged parts for safety.

Be careful during adjustments of the hand lawn mower to prevent entrapment of the fingers between moving blade and fixed parts of the machine.

CONTENTS

1 x Hand Lawn Mower LMP-301
1 x Lower handle
1 x Upper handle

2 x Handle uprights
6 x Handle bolts, nuts & washers
1 x Instruction manual

OZITO INDUSTRIES PTY LTD

AUSTRALIA (Head Office)

5 Chestnut Crt, Dingley, Victoria, Australia, 3172

Telephone: 03 9558 3999

Facsimile: 03 9558 0583

www.ozito.com.au

WARRANTY

THIS WARRANTY FORM AND CONFIRMED BUNNINGS REGISTER RECEIPT SHOULD BE **RETAINED BY THE CUSTOMER** AT ALL TIMES

The warranty is only made available by returning the product to your nearest Bunnings Warehouse with a **confirmed Bunnings register receipt**.

**YOUR WARRANTY FORM SHOULD BE RETAINED
BY YOU AT ALL TIMES.**

**SHOULD YOU HAVE ANY QUESTIONS PRIOR TO
RETURNING YOUR PRODUCT FOR WARRANTY OR
REPAIR PLEASE TELEPHONE OUR CUSTOMER
SERVICE HELPLINE:**

**Australia 1800 069 486
New Zealand 0508 069 486**

TO ENSURE A SPEEDY RESPONSE PLEASE HAVE THE MODEL NUMBER AND DATE OF PURCHASE AVAILABLE. AN OZITO CUSTOMER SERVICE REPRESENTATIVE WILL TAKE YOUR CALL AND ANSWER ANY QUESTIONS YOU MAY HAVE RELATING TO THE WARRANTY POLICY OR PROCEDURE.

PURCHASED FROM: _____

DATE PURCHASED: _____

2 YEAR REPLACEMENT WARRANTY

Your Ozito tool is guaranteed for a period of **24 months from the original date of purchase** and is intended for DIY (Do it yourself) use only.

WARNING

The following actions will result in the warranty being void.

- Professional, Industrial or high frequency use.
- If the tool shows signs of damage or defects caused by or resulting from abuse, accidents or alterations.
- If the tool is disassembled or tampered with in any way.

Note: Warranty excludes consumable parts such as blades, blade reels, and other accessories